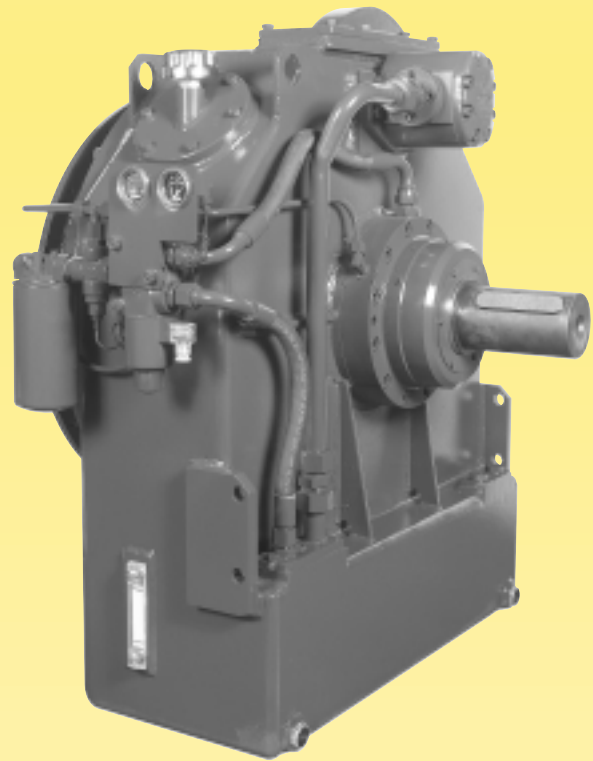


TRANSFLUID



TRANSFLUID

trasmissioni industriali



drive with us

KPT

DRAIN-TYPE FLUID COUPLINGS
for internal combustion engines

FLUID COUPLINGS KPT SERIES for internal combustion engines

DESCRIPTION

The **KPT** is a variable fill fluid coupling enclosed into a casing connected to the Diesel engine by means of a SAE housing. The **KPT** has been designed to meet the market requirements for a unit combining the technical features of a conventional Power Take Off with the performances of a fluid coupling.

The **KPT** has an integral feeding pump driven by the Diesel engine. A remote electrically operated ON-OFF solenoid valve allows the fluid coupling circuit to be fed when it is turned ON, while a rapid oil drain through calibrated orifices located on the periphery of the fluid coupling occurs when it is turned OFF. A forced bearing lubrication is always assured continuously.

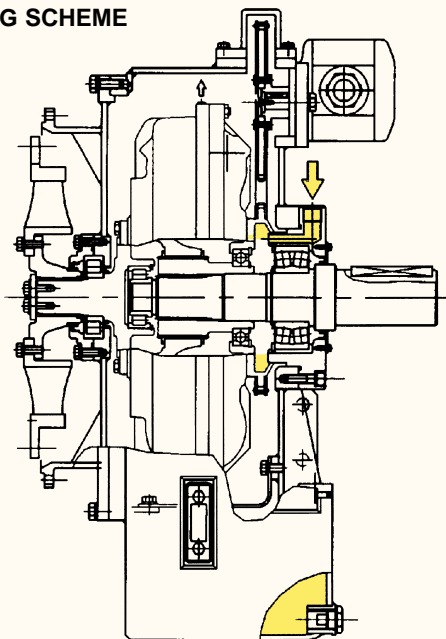
The **KPT** range is suitable for powers up to 1000 kW.

The engine flywheel is connected to the **KPT** input by a highly torsionally flexible coupling. The output shaft can be connected to the driven machine by an elastic coupling, a cardan shaft or a pulley.

Standard accessories: oil feeding pump, oil filter with pressure and temperature gauges, ON-OFF electric valve, oil temperature and pressure switches, oil level indicators.

Optionals: water/oil heat exchanger or radiator, quick release valves, output pulley, elastic couplings, output flange for cardan shafts and cardan shafts.

WORKING SCHEME



rpm	SELECTION TABLE (kW)					
	15	17	19	21	24	27
1000	-	-	70	100	150	220
1200	-	65	90	150	220	300
1500	65	90	160	230	315	570
1800	85	155	275	400	545	1000
2200	155	265	355	585	800	-
2600	200	360	460	-	-	-

FEATURES

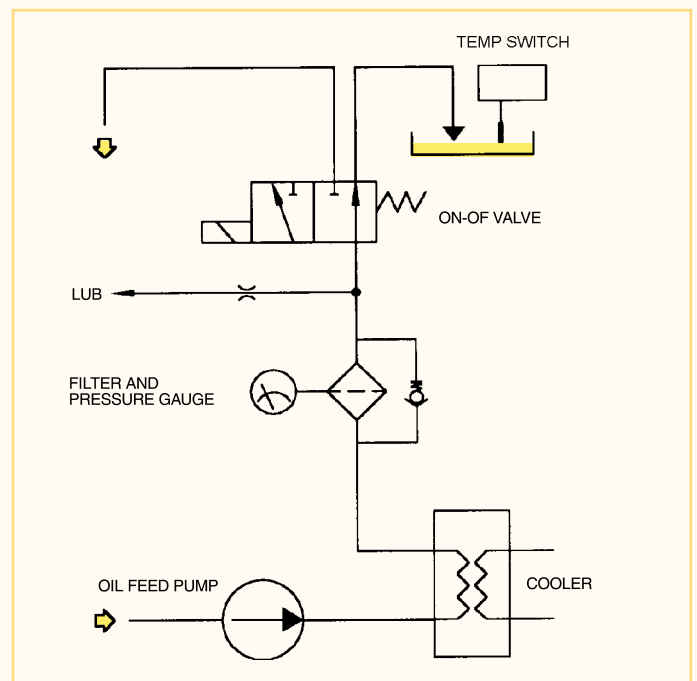
The **KPT** drain type fluid coupling allows to disconnect the engine from the load granting the following advantages:

- unloaded engine warm up
- smooth start up, not belt slip
- shock and overload protection
- torsional vibration dampening
- high radial load capacity (KPTO)
- remote control by electric valve
- load positioning
- inexpensive and easy maintenance due to external mounting of the main accessories like oil filter, feeding pump, control valve
- longer life thanks to no friction linings to wear out.

APPLICATIONS

- mills, crushers, wood chippers, grinders
- belt conveyors
- reciprocating and centrifugal pumps, compressors
- marine propulsion, boat thrusters
- generators
- fans and blowers.

HYDRAULIC CIRCUIT



To calculate oil and water flow into heat exchanger, use following formulas:

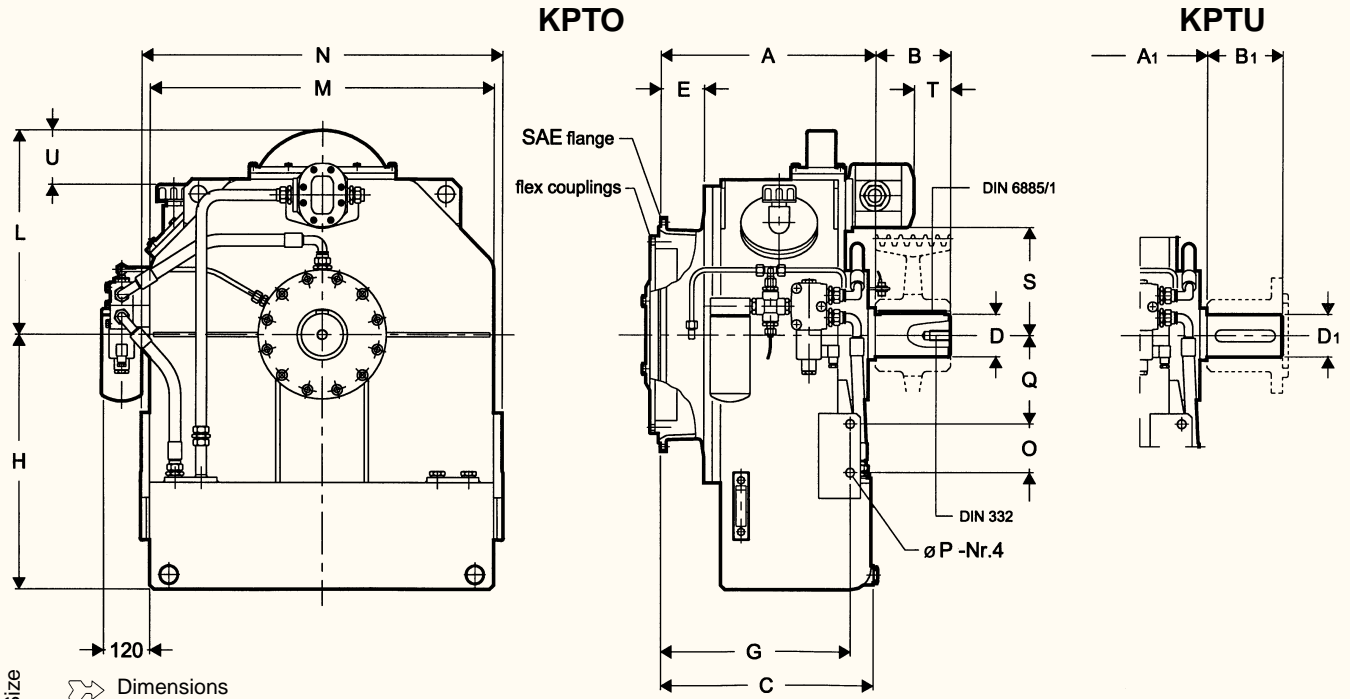
$$\text{water (lt/min)} = \frac{\text{power (kW)}}{50} \times 8$$

$$\text{oil (lt/min)} = \frac{\text{power (kW)}}{50} \times 10$$

Above formulas are based upon following data:

Exchanger oil inlet = 110°C Exchanger oil outlet = 100°C
Exchanger water inlet = 85°C Exchanger water outlet = 90°C

Engine cooling water can be used.



Size Dimensions

	A	A1	B	B1	C	D	D1	E	G	H	L	M	N
15	414	414	130	110	430	70	65	61	362	440	395	560	590
17	425	415	150	120	420	80	75	68	376	500	420	670	700
19	455	445	150	120	450	80	75	98	406	500	420	670	700
21	517	505	180	140	512	100	85	105	458	600	480	820	860
24	583	495	180	140	502	100	85	95	448	600	480	820	860
27	710-726*	606-622*	220	180	605-621*	115	100	123-139*	550-566*	675	445	890	940

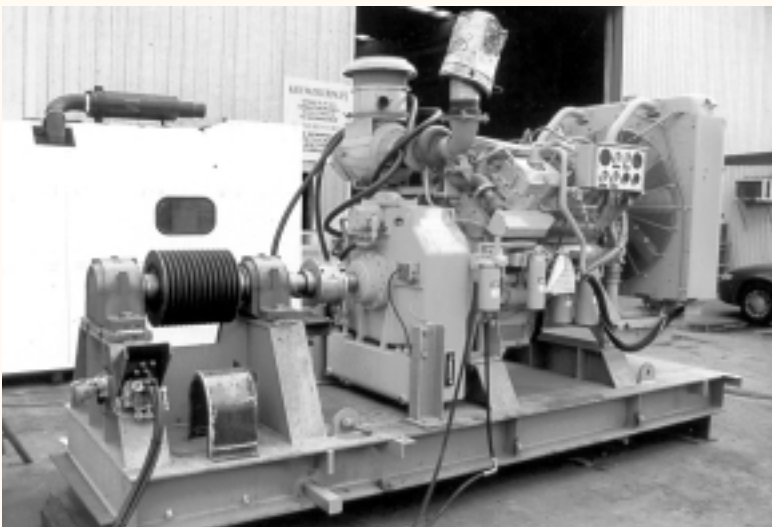
Size Dimensions

	O	P	Q	S	T	U	SAE housing	SAE flywheel	Weight (kg) w/o oil	Oil (lt)
15	65	17	135	205	66,5	115	3-2-1	11.5-14	250	28
17	80	19	155	228	68	85	2-1-0	11.5-14	295	35
19	80	19	155	228	68	85	2-1-0	11.5-14	310	35
21	115	21	210	260	87	115	1-0-00	14-16-18	475	65
24	115	21	210	260	163	70	1-0-00	14-16-18	550	65
27	130	23	220	-	-	-	0-00	18-21*	800	87

* Dimensions for flywheel 21".

For admissible radial loads refer to TF 6093-A.

Dimensions can be changed without notice



24 KPTO, STONE CRUSHER 600 kW @ 1800 rpm



21 KPTO, WOOD CHIPPER 350 kW @ 1800 rpm

EUROPE

AUSTRIA

ASC GMBH
4470 Enns

AUSTRIA (Diesel appl.)

EUGEN SCHMIDT UND CO
53842 Troisdorf

BELGIUM

N.V. ESCO TRANSMISSIONS S.A.
1831 Diegem

DENMARK

NOMO TRANSMISSIONER
2765 Smørum

DENMARK (Diesel appl.)

TRANSFLUID s.r.l.
20016 Pero (MI)

ENGLAND & IRELAND

BIBBY TRANSMISSIONS LTD
Dewsbury West Yorkshire wf13 1eh

ENGLAND & IRELAND (Diesel appl.)

MARINE AND INDUSTRIAL TRANS. LTD.
Queenborough Kent me11 5ee

FINLAND

OY JENS S. AB
02271 Espoo

FRANCE

▲ TRANSFLUID FRANCE SARL
38500 Voiron
Tel.: 4.76919242
Fax: 4.76919242

GERMANY

EUGEN SCHMIDT UND CO
53842 Troisdorf

HOLLAND

BENZLER TBA B.V.
05902 RH Venlo

HOLLAND (Diesel appl.)

ESCO AANDRIJVINGEN B.V.
2404 HM Alphen a/d Rijn

HUNGARY

AGISYS
2045 Torokbalint

NORWAY

TRANSFLUID s.r.l.
20016 Pero (MI)

PORTUGAL

TRANSMICEM LDA
2735-469 Cacem

SLOVENIJA

NOVI STROJI
3210 Slovenske Konjice

SPAIN

TECNOTRANS SABRE S.A.
08040 Barcelona

SWEDEN

JENS S. TRANSMISSIONER AB
SE-601-19 Norrköping

SWEDEN (Diesel appl.)

M-TECH TRANSMISSIONS AB
S-618 93 Kolmården

SWITZERLAND

TRANSFLUID s.r.l.
20016 Pero (MI)

TURKEY

REMAS
81700 Tuzla Istanbul

AMERICA

ARGENTINA

TRANSFLUID s.r.l.
20016 Pero (MI)

BRAZIL & CHILE

PANA AMERICAN
Sao Paulo

COLUMBIA

A.G.P. REPRESENTACIONES LTDA
Bogotá

MEXICO

A.A.R.I., S.A. de C.V.
11500 Mexico df

PERU'

IMINTESA
Lima

U.S.A. & CANADA

KRAFT POWER CORP.
Suwanee GA 30024

U.S.A. & CANADA & MEXICO

▲ TRANSFLUID LLC
Addison, IL 60101
Tel.: 630.5435892
Fax: 630.5435896

AFRICA

EGYPT

INTERN. FOR TRADING & AGENCY (ITACO)
Nasr City (Cairo)

SOUTH AFRICA

BIBBY TURBOFLEX (S.A.) Pty Ltd.
Atlasville Boksburg 1465

SOUTH AFRICA (Diesel applic.)

TRANSFLUID s.r.l.
20016 Pero (MI)

TUNISIA

SOCOS INDUSTRIES
1008 Montfleury - Tunis

OCEANIA

AUSTRALIA

CBC POWER TRANSMISSION
Kingsgrove NSW 2208

NEW ZEALAND

PAYKEL ENG. SUPPLIES
Auckland

ASIA

ASIA South East

ATRAN TRANSMISSION PTE LTD
Singapore 128384

CHINA

▲ TRANSFLUID srl
Beijing Representative Office
Tel.: 10.62381099
Fax: 10.62381090

INDIA

PROTOS ENGINEERING CO. PRIVATE LTD
Chennai 600002

INDONESIA

PT. HIMALAYA EVEREST JAYA
Jakarta 11710

IRAN

LEBON CO.
Tehran 15166

ISRAEL

ELRAM ENGINEERING LTD.
Emek Hefer

JAPAN

ASAHI SEIKO CO. LTD.
Osaka 593

KOREA

NARA CORPORATION
Pusan - South Korea

TAIWAN

FAIR POWER TECHNOLOGIES CO. LTD
Taipei

THAILAND

SYSTEM CORP. LTD.
Bangkok 10140

VIETNAM

CETRADE (M) SDN BHD
Penang Malaysia

LOCAL DISTRIBUTOR

▲ TRANSFLUID SUBSIDIARIES